



HS-Group
HILBERG & PARTNER



Porschestr. 12
63512 Hainburg, Germany

Phone: +49 6182 993 667 0
Fax: +49 6182 993 667 9

E-Mail: info@hilberg-vakuumtechnik.de
www.hilberg-vakuumtechnik.de



High Vacuum Web Coater
HP-MET Series

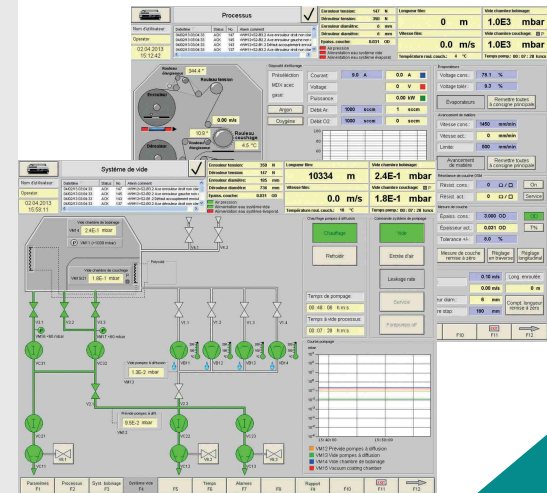
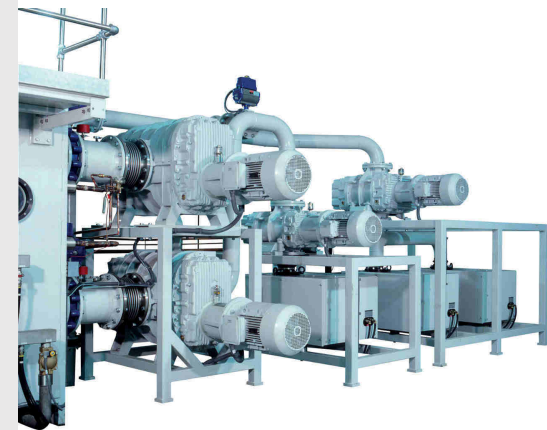
High Vacuum Web Coater HP-MET Series



Key Features HP-MET Series:

- ▶ Coating of different materials:
 - Aluminium
 - ZnS
 - Copper
 - Silver
 - Al₂O₃
 - Silica
 - and many others

- ▶ High efficient induction heated crucibles
- ▶ Pinhole free coatings
- ▶ HS BIAS - tramline free CPP coating
- ▶ ALOx coatings
- ▶ Plasma pre-treatment
- ▶ Individual MF power supplies
- ▶ Graphical user interface LayWeb
- ▶ Fully automated machine control
- ▶ Synchronized AC-drives
- ▶ Post cooling roller
- ▶ Unwinder axial adjustment
- ▶ Contactless layer measuring
- ▶ Good uniformity
- ▶ Enclosed evaporator box
- ▶ Easy cleaning of shutter and box
- ▶ Easy maintenance
- ▶ Powerfull pumping system
- and many others



MACHINE TYPE	HP-MET 1300i	HP-MET 1700i	HP-MET 2100i	HP-MET 2500i
Max coating width [mm]	1300	1700	2100	2500
Max web speed [m/s]	17			
Max winder tension [N]	400	500	700	850
Max winder diameter [mm]	1150			
Coating drum temperature [C°]	-15 to +30			
No. of crucibles	9	12	14	17
Crucible diameter [mm]	135			
Crucible height [mm]	120			
Vacuum chambers	1150			
Pressure coating section [mbar]	4 x 10 ⁻⁴			
Pumping time to 4 x 10 ⁻⁴ [min]	< 6			
Power consumption [kW]	180	210	250	290

* Other machine sizes and specifications on request

For more information please contact:

Phone: +49 6182 993 667 0
 E-Mail: info@hilberg-vakuumtechnik.de